



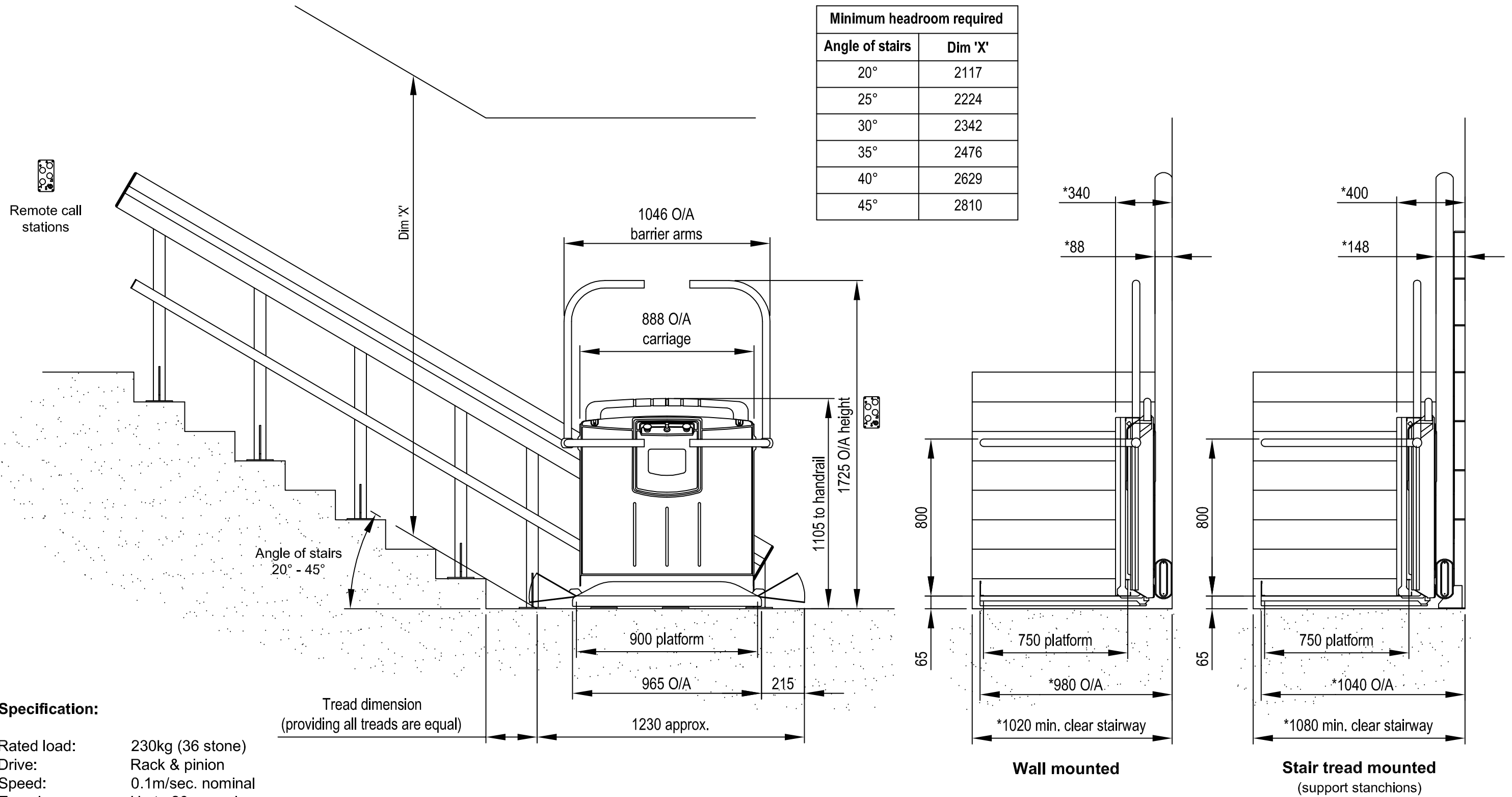
An independent family business since 1867

Stairiser SX

Technical data sheet for wheelchair platform stairlift
900 x 750 end access

Stannah

Minimum headroom required	
Angle of stairs	Dim 'X'
20°	2117
25°	2224
30°	2342
35°	2476
40°	2629
45°	2810



Specification:

- Rated load: 230kg (36 stone)
- Drive: Rack & pinion
- Speed: 0.1m/sec. nominal
- Travel: Up to 20m maximum
- Angle of stairs: 20° - 45° maximum
- Site: Straight stairway without intermediate landings. Interior & exterior models available.
- Fixing: Wall mounted or stair tread mounted.
- Max. stops: 2
- Power supply: Dedicated 240V single phase AC
- Standard: Complies with ISO 9386-2

***Dimensions do not allow for skirting or stair stringer thickness**
All dimensions in mm unless stated

Waiver

This data sheet is for guidance only & must not be used for proper working drawings. Please contact Stannah Lifts for particular details before proceeding. Owing to our policy of continual improvement, we reserve the right to alter specifications & dimensions without prior notice.

Anton Mill, Andover, Hampshire, SP10 2NX

Stannah Lifts Ltd.
Tel: 01264 339090
www.stannahlifts.co.uk

Information sheet
SX 706
27.09.10